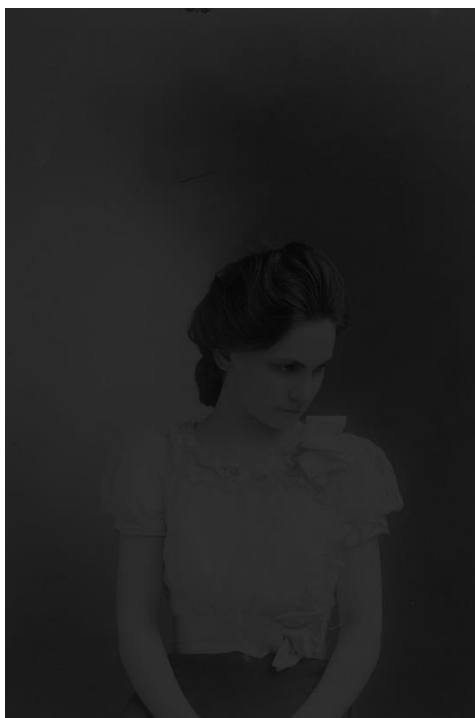


PRESS RELEASE- May 2017

Contact: Oliver Fuke  
T: 020 7654 0179  
E: oliver.fuke@jerwoodspace.co.uk

[www.jerwoodvisualarts.org](http://www.jerwoodvisualarts.org)

Jerwood Visual Arts presents a new commission by Ryan L. Moule



Ryan Moule, *Alice as the Holocene*, 2017.  
Chemically Unfixed Silver Gelatin Print. Image  
courtesy the artist

Ryan L. Moule  
*Vessels and Vestiges*

22 May – 21 October 2017  
Project Space, Café 171, Jerwood Space, London, SE1 0LN

*Vessels and Vestiges* is an exhibition of chemically unfixed photographic prints by Swansea-based artist, Ryan L. Moule. Against the ubiquity of digital photography, these prints are concerned with an investigation of the medium of analogue photography.

Through the presentation of photographs in their unfixed state, Moule repositions the image away from it being an assumed signifier of certainty to one of uncertainty and fragility. Exposure of the photographic light-sensitive paper is slowed down by their presentation under UV filtered box frames. This leaves them in a process of becoming, as the images continue to subtly transform over a prolonged period of time. Through the decision to not complete the traditional printing process, Moule aims to oscillate focus between both the images as a form of representation and its material.

More broadly, Moule's practice is concerned with challenging the authority of the visual image and their passive consumption. As a gesture, the chemical destabilisation of the photographic image is intended to reflect on their subjective nature. He is interested in interrogating how the lens is implicated in the production of various forms of realism that establish a sense of objective truth. The physical changes that take place on the prints as a result of their unfixed condition are also a comment on how an image's meaning itself changes in and over time.

## Listings Info

Artist: Ryan Moule  
Title: *Vessels and Vestiges*  
Dates: 22 May – 26 August 2017  
Address: Project Space, Café 171, Jerwood Space, SE1 0LN  
Opening Times: Mon - Fri 9am – 5pm, Sat 10am – 2pm  
Closed Sundays and Bank Holidays  
Admission: Free  
Nearest tube: Southwark, London Bridge or Borough

For further information please contact Jerwood Visual Arts: 020 7654 0179 or [jva@jerwoodspace.co.uk](mailto:jva@jerwoodspace.co.uk) or visit: [www.jerwoodvisualarts.org/projectspace](http://www.jerwoodvisualarts.org/projectspace)

## Notes to Editors

**Ryan L. Moule** (b. 1987) is an artist based in South Wales. He studied MA in Photography at the Royal College of Art (2011-13). Moule has exhibited nationally and internationally in both group and solo exhibitions. Recent exhibitions include, *Burning with Pleasures*, Matera, Rome (2016); *Snaefells*, Filet Filet, London (2016); *Murmur*, Flowers Gallery, London (2016); *Dark Adaptation*, South Kiosk, London (2016); and *Divisible Remainder*, Mission Gallery, Wales (2015). Moule is a lecturer in Photography and Contextual Studies at Swansea College of Art, UWTSD.

**Project Space** is part of the Jerwood Visual Arts programme and provides exhibition and development opportunities to emerging artists; offering a small grant to develop new experimental work, which is then exhibited within the unique environment of Café 171 at Jerwood Space, adjacent to the main gallery spaces. Since 2004 it has presented new work from artists including Soheila Sokhanvari, Jasmine Johnson, Keira Greene, Susannah Worth, Luke McCreadie, Alice May Williams, Paul Schneider, Rhys Coren, Anna Bunting-Branch, Emma Charles, Alec Kronacker, Meg Mosley, Sara Nunes Fernandes, Johann Arens, Matthew Johnstone, Katie Schwab and Jamie George, Ben Senior, Ralph Dorey, Mindy Lee, Patrick Coyle, Gemma Anderson, Annabel Tilley, Alice Browne, and Holly Antrum. For more information please visit: [www.jerwoodvisualarts.org/projectspace](http://www.jerwoodvisualarts.org/projectspace)

**Jerwood Visual Arts** is a national programme supporting visual arts practice, through which Jerwood Charitable Foundation works with early career artists to commission and present new work. Artist opportunities run throughout the year alongside a programme of related exhibitions, events and commissioned writing taking place online, in London and across the UK: [www.jerwoodvisualarts.org](http://www.jerwoodvisualarts.org)

**Jerwood Charitable Foundation** is dedicated to imaginative and responsible revenue funding of the arts, supporting artists to develop and grow at important stages in their careers. The aim of its funding is to allow artists and arts organisations to thrive; to continue to develop their skills, imagination and creativity with integrity. It works with artists across art forms, from dance and theatre to literature, music and the visual arts. For more information visit [www.jerwoodcharitablefoundation.org](http://www.jerwoodcharitablefoundation.org)