

JERWOOD **DRAWING** PRIZE

2008 Prizewinners Announcement

EMBARGOED UNTIL 8pm, Tuesday 16th September 2008

The Jerwood Charitable Foundation and The Centre for Drawing, University of the Arts London will announce the prizewinners of the Jerwood Drawing Prize 2008 at 7pm on Tuesday 16th September 2008 at the opening of the exhibition at the Jerwood Space, London.

The **First Prize of £6000**, **Second Prize of £3000** and **two Student Prizes of £1000** have been chosen from a shortlist of 63 works by 54 artists selected by: **Tony Bevan**, Artist; **Emma Dexter**, Director of Exhibitions at Timothy Taylor Gallery, London & Editor of Vitamin D (Phaidon); and **John McDonald**, Art Critic of the Sydney Morning Herald, Australia.

The Jerwood Drawing Prize 2008 prizewinners are:

First Prize (£6,000)

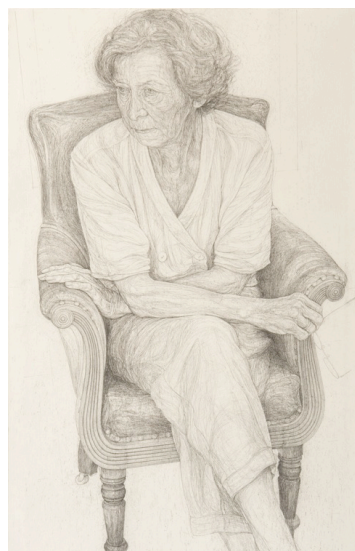
Warren Baldwin

Study for Portrait V

Pencil and Charcoal on Paper

2008

130 x 91 cm



Second Prize (£3,000)

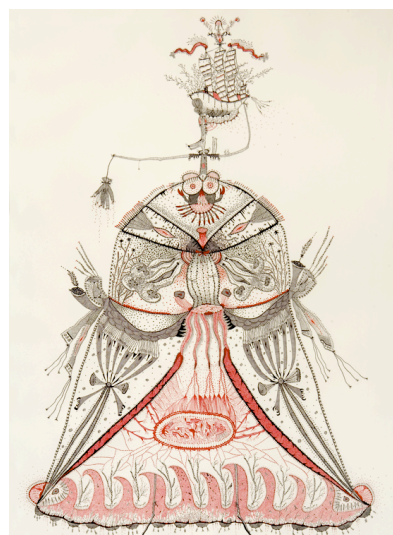
Lia Anna Hennig

***When I'm Sea Queen surely I will need a
Sea King***

Ink on Paper

2007

160 x 120 cm



Student Prize (£1,000)
Tobias Teschner
Nurembergspot
Pencil
2008
28 x 23 cm



Student Prize (£1,000)
Aline von der Assen
Collaborative drawings (Big Worm)
Coloured Pencil on Paper
2008
90 x 150 cm



Tim Eyles, Chairman of the Jerwood Charitable Foundation, Roanne Dods, Director of the Jerwood Charitable Foundation, Professor Anita Taylor Director of the Jerwood Drawing Prize and Director of The Centre for Drawing, University of the Arts London, will be joined at the opening of the exhibition by selector **Emma Dexter**, who will announce and present the awards at the Jerwood Space, London at 7pm on **Tuesday 16th September 2008.**

2,537 entries were submitted for consideration by the selection panel of the Jerwood Drawing Prize 2008 by artists resident or domiciled in the UK. The shortlist of 63 drawings includes work by 54 highly regarded, established artists as well as relative newcomers and students fresh from art school. The exhibition will be held at the **Jerwood Space, London SE1** from **17th September to 26th October 2008.** The exhibition will then tour to galleries in Cheltenham, Winchester and Bury St Edmunds.

Roanne Dods, Director of the Jerwood Charitable Foundation, commented: "**Over the last few years, drawing has been attracting more and more practitioners, audiences and critical interest. A combination of activities around the country have been contributing to this renaissance, and I am very proud of the part that the Jerwood Drawing Prize has had in this.**"

A **full colour catalogue** is available to accompany the exhibition, illustrating work from all shortlisted artists, with a **foreword by Roanne Dods, introduction by Anita Taylor, and essay by John McDonald.**

Images and biographical details are available for all artists from Chloë Barker, Press Officer, on 01372 462190 or chloe@parkerharris.co.uk. Parker Harris are managing the press campaign as part of the Jerwood Visual Arts Series.

Exhibition Tour: The Jerwood Drawing Prize 2008 will be shown at the following venues:

<i>Jerwood Space</i> , 171 Union Street, London SE1 0LN	17 th September – 26 th October 2008
<i>Summerfield Gallery</i> , Pittville Studios, University of Gloucestershire, Albert Road, Cheltenham GL51 3JG	7 th November - 28 th November 2008
<i>Winchester Discovery Centre</i> , Jewry Street, Winchester SO23 8RX	24 th January – 8 th March 2009
<i>Bury St Edmunds Art Gallery</i> , The Market Cross, Bury St Edmunds, Suffolk IP33 1BT	18 th March – 25 th April 2009

Notes to Editors

1. Background on the selection panel:

Tony Bevan is an Artist. Since studying at the Slade School of Fine Art, London (1974-76), Goldsmiths' College, University of London (1971-74) and Bradford School of Fine Art (1968-71), his largely figurative works have been exhibited widely throughout the UK, Europe, and the United States. He has been the subject of several monographs and his work is held in many collections, including Tate Modern and the National Portrait Gallery.

Emma Dexter is Director of Exhibitions at Timothy Taylor Gallery, London. From 2000 - 2007 she was a Senior Curator at Tate Modern, where she curated exhibitions by Pierre Huyghe 2006, Frida Kahlo 2005, Luc Tuymans and Bruce Nauman 2004, and curated Tate's first photography exhibition *Cruel and Tender* in 2003. In 2005 she wrote the introductory essay for Phaidon's *Vitamin D* - a survey of contemporary drawing. From 1992 - 2000 she was Director of Exhibitions at the ICA, London, where she mounted exhibitions by Marlene Dumas, Luc Tuymans, John Currin, Gary Hume, Jake and Dinos Chapman and Steve McQueen.

John McDonald is the Senior Art Critic for the Sydney Morning Herald, NSW Australia. His publications include monographs on Australian artists such as David Strachan, Ari Purhonen and Jeffrey Smart, and an essay to accompany Rex Dupain's photographs in the book, 'From Bondi to Broken Hill'. He has lectured throughout Australia, and taught Art History & Theory at the National Art School, Sydney. From 2002-04 he was director of Newcontemporaries, a non-commercial exhibition space at the Queen Victoria Building in Sydney, committed to showing the work of new & emerging artists. Over the past three years, he has acted as publisher-in-chief of East-West Editions, and founding editor of the magazines, *Australian Art Review*, and *East-West Arts*.

2. The principal benefactor, the **Jerwood Charitable Foundation** is dedicated to responsible and imaginative funding of the visual and performing arts and other areas of human endeavour and excellence. It supports, among other things, the *Jerwood Artists Platform*, *Jerwood Commissions* at the Wapping Project, *Jerwood Bank: The Siobhan Davies Dance Company*. In October 2006, the **Jerwood Visual Arts Series** was launched at the Frieze Art Fair, and brings together Jerwood Contemporary Painters, Jerwood Sculpture Prize, the Jerwood Photography Prize, Jerwood Applied Arts and the Jerwood Drawing Prize. Each exhibition creates an overview of current debate and practice in each of these fields.
3. The **Jerwood Drawing Prize** aims to promote and reward excellence and talent in contemporary drawing practice. It is organised by The Centre for Drawing, a Research Centre for the University of the Arts London at Wimbledon College of Art, under the direction of Professor Anita Taylor, and was established in 1994. The objectives of the Jerwood Drawing Prize are to promote the discipline of drawing; provide a forum for the exhibition of current drawing practice; situate this discourse within the educational context of an art school; gain knowledge and understanding about drawing in the UK through this 'survey' of artists working in the discipline.

4. **The Centre for Drawing, University of the Arts London** is a University-wide Research Centre dedicated to exploration, research and discovery in the uses of drawing across all disciplines. It was originally established as the Centre for Drawing at Wimbledon School of Art in 2000 and designated in 2007 as a Research Centre encompassing all six Colleges of the University of the Arts London. Professor Anita Taylor was appointed full-time Director in July 2008. The Deputy Director is Professor Stephen Farthing, Rootstein Hopkins Chair of Drawing at the University.
5. **Wimbledon College of Art** provides foundation, undergraduate, taught postgraduate and research degree study opportunities, specialising in Fine Art and Theatre Design. There is a focus on drawing throughout all the academic activities of the College; Wimbledon is the host College for the University-wide Research Centre, *The Centre for Drawing* and the programming of the *gallery at wimbledon college of art* exemplify the focus on drawing within the College. Alumni of Wimbledon College of Art include Tony Cragg, Peter Doig and Raymond Briggs.
6. **University of the Arts London** is the first dedicated arts institution in the UK to achieve university status. A creative constellation lighting up 22 sites across London, from Oxford Street, to the Archway, to Hackney, Wimbledon and Southwark, the University brings together six of the world's most famous art and design colleges. They are:
 - Camberwell College of Arts
 - Central Saint Martins College of Art and Design (incorporating Drama Centre and Byam Shaw School of Art)
 - Chelsea College of Art and Design
 - London College of Communication (formerly London College of Printing)
 - London College of Fashion (incorporating Cordwainers).
 - Wimbledon College of Art (formerly Wimbledon School of Art)

For further information on the **Jerwood Drawing Prize 2008** contact: Chloë Barker, Press Officer, on 01372 462190 or chloe@parkerharris.co.uk.